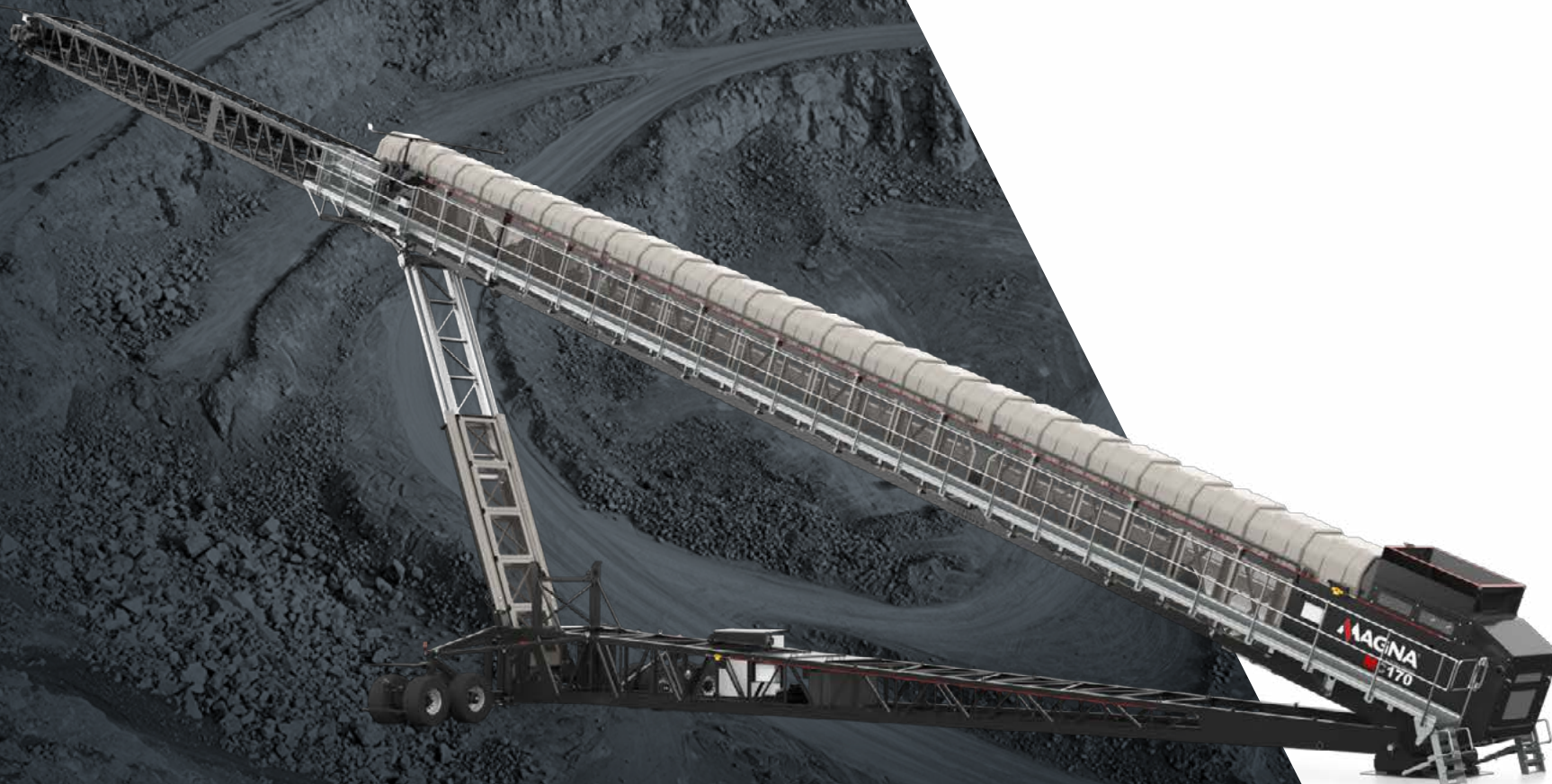




TECHNICAL
SPECIFICATION

MC170

TELESCOPIC CONVEYOR



OVERVIEW

TECHNICAL SPECIFICATION



Total weight: 56,500kg (124,561lbs)

Chassis

Length: 26.49m (86' 11")
Width: 4.87m (15' 11")
Height: 3.6m (11' 9.5")

Inner & Outer Conveyor

Length: 33.56m (110' 2")
Width: 2.6m (8' 6")
Height: 3m (9' 10")

(Transportable by 5 x 40ft Containers)

Working: **Drum Minimum Length (Retracted):** 32.7m (107' 3")

Working Width (Wheels in radial position): 10.1m (33' 2")

Minimum Height: 6.5m (21' 4")

Minimum working angle: 7°

Drum Maximum Length (Extended): 51.45m (168' 10")

Working Width (Wheels in Radial position): 10.1m (33' 2")

Maximum Height: 17.65m (58' 0")

Maximum working angle: 18°

Maximum Tonnage: Up to 1500 tph

Maximum Feed Size: 150mm (6")



MC170

FEATURES

TECHNICAL SPECIFICATION



- Automated Stockpile Patterns - Radial windrow, Inline Windrow, Radial Conical, Inline Conical.
- Feedboot sealed with slider pads as standard for better feedboot sealing.
- Outer conveyor full length underguards and side guards for safety.
- Heavy duty belt tensioner.
- Winch with counter to control position of inner conveyor.
- Hydraulic Discharge Height Adjustment.
- Twin radial wheel drive.



OVERVIEW

TECHNICAL SPECIFICATION



Feedboot Dead box (Standard)

Standard Capacity: 1.55m³ (1.4 Cu. Yd.)

Feed In width: 1.64m (5' 4")

Impact base and
side rollers

Twin Motors with
Helical gearbox on inner
and outer conveyors

Hydraulic raise/lower
radial powered by 30kw
Electric motor

Twin radial wheel drive

Pit Chassis - Single axle c/w
jacking rams and towing eye

Stockpile Capacity @ 18°@ 270°Radial: 92,397m³ (120,851 Cu.Yd.)

MC170

OVERVIEW

TECHNICAL SPECIFICATION



INNER CONVEYOR

Width:	1050mm (42")
Belt Centres:	21.65m (71')
Belt Type:	Plain
Belt Spec:	EP400 3 4+2
Drive Drum Diameter:	520mm (20")
Tail Drum Diameter:	457mm (17.9")

OUTER CONVEYOR

Width:	1050mm (42")
Belt Centres:	31m (101'9")
Belt Type:	Plain
Belt Spec:	EP400 3 4+2
Drive Drum Diameter:	520mm (20")
Tail Drum Diameter:	457mm (17.9")
Operating Angle:	7 - 18°



OPTIONS

TECHNICAL SPECIFICATION



- Pull Cord Emergency Stop
- 6mm Mild Steel feedboot liners
- 6mm AR400 feedboot liners
- 12mm AR400 feedboot liners
- 20mm rubber feedboot liners
- Conveyor Fitted with Heavy Duty Plain Belt EP500/3 Ply x 5+1.5 Covers
- Working lights
- Quad radial drive for high resistance drive application
- Low level grease points for inner conveyor and outer conveyor

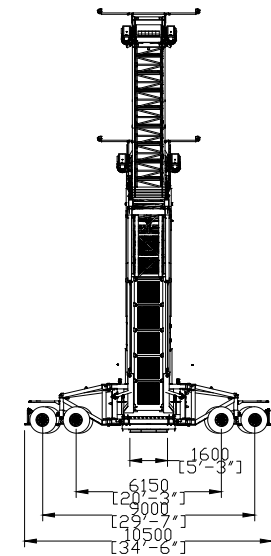
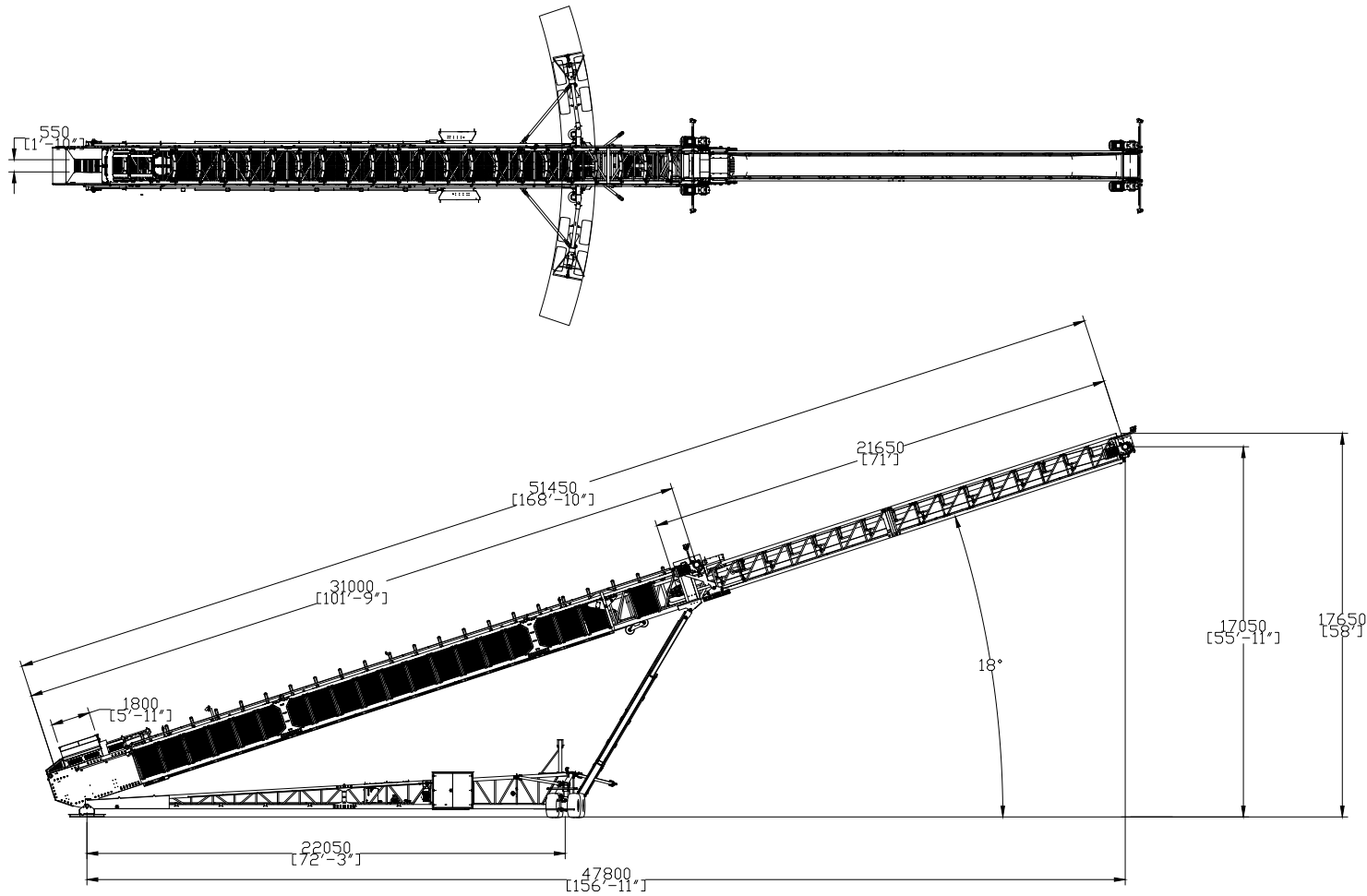


DIMENSIONS

TECHNICAL SPECIFICATION



WORKING FULLY EXTENDED

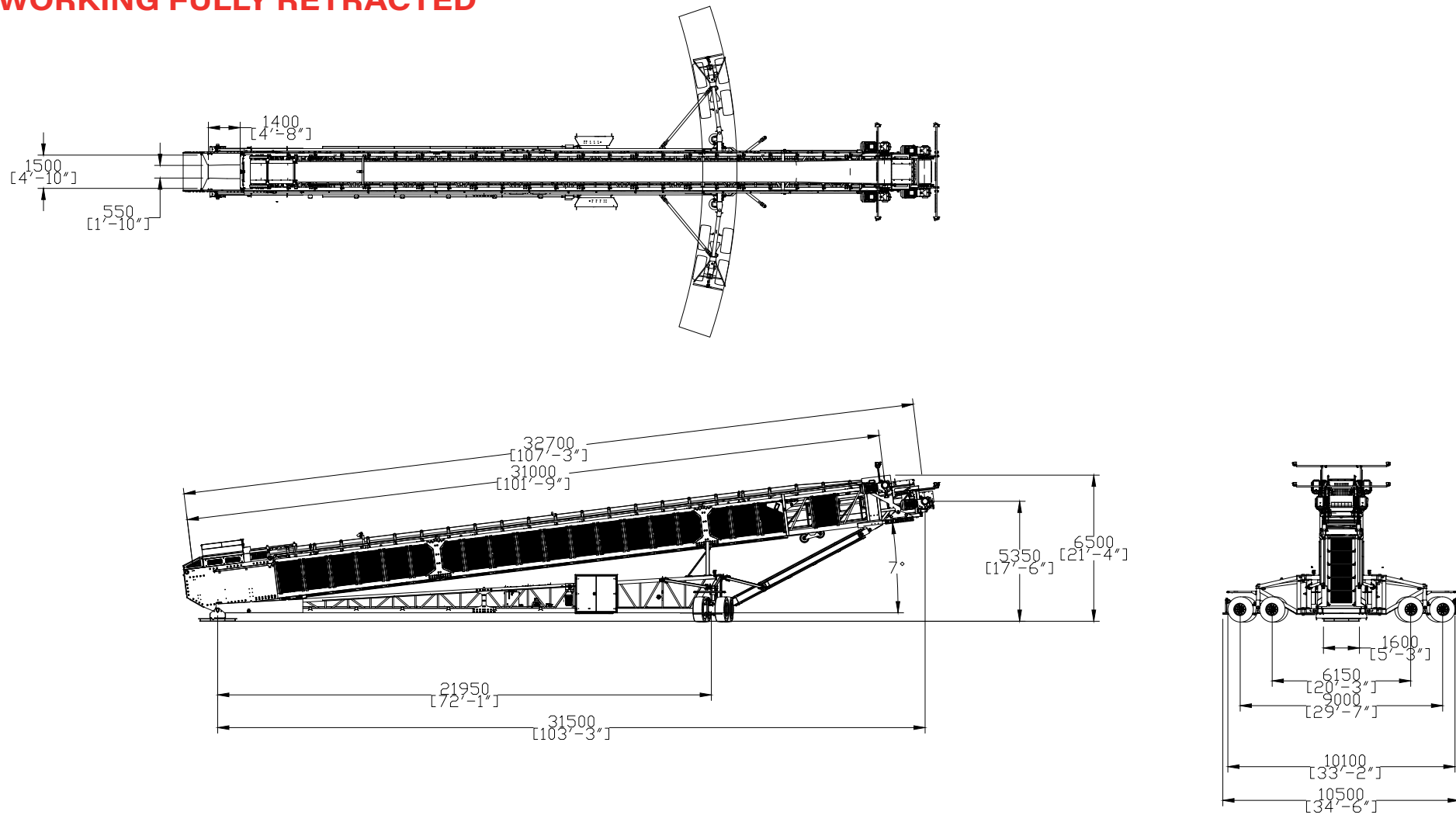


DIMENSIONS

TECHNICAL SPECIFICATION



WORKING FULLY RETRACTED



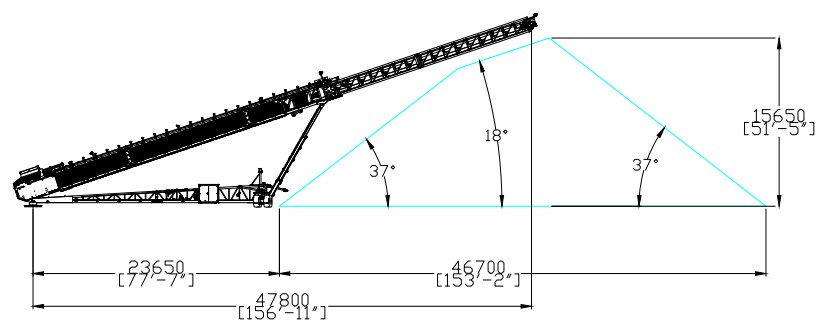
MC170

DIMENSIONS

TECHNICAL SPECIFICATION

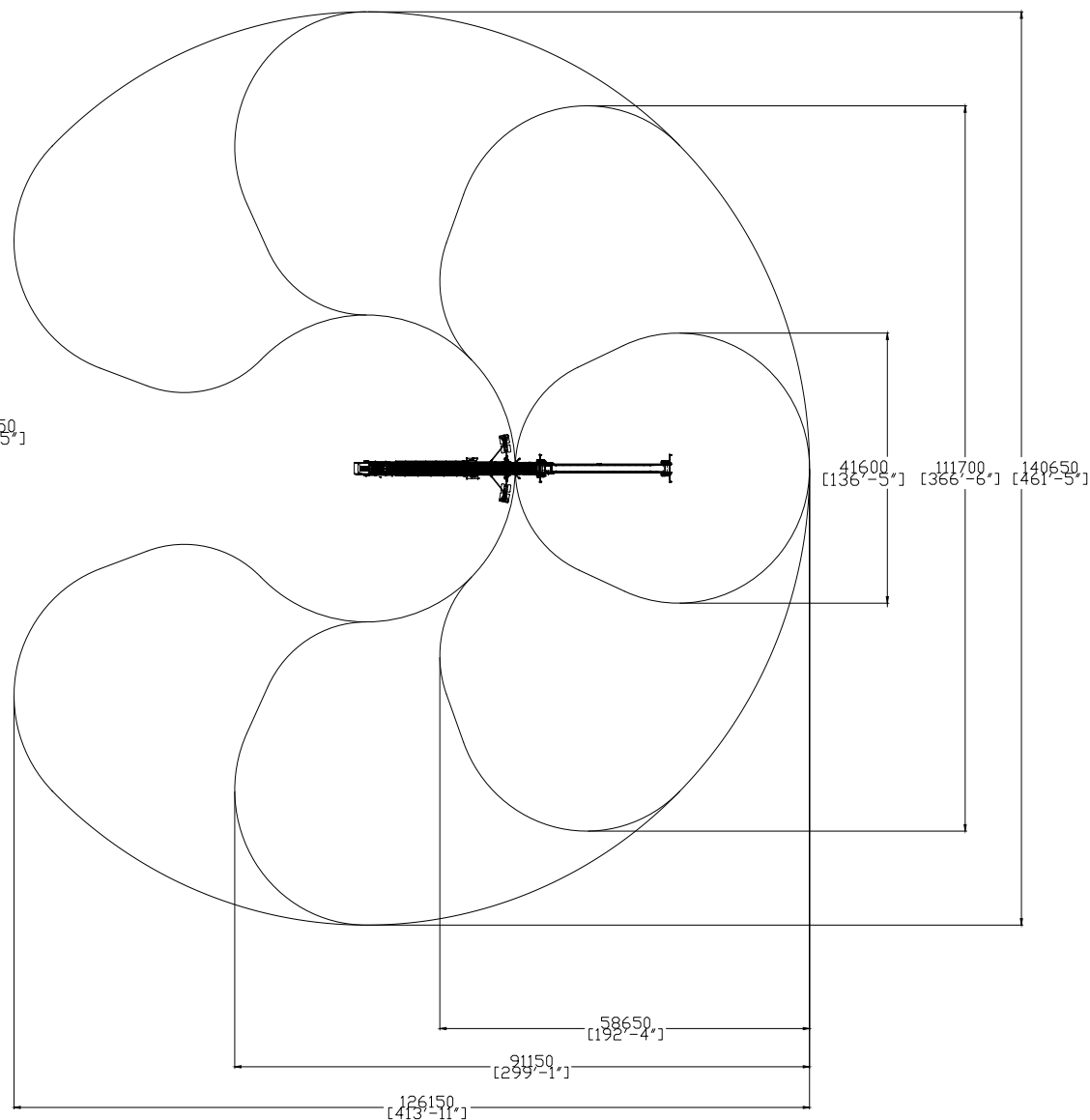


STOCKPILE DIMENSIONS



APPROX. STOCKPILE CAPACITY
MATERIAL DENSITY: 1600kg/m³

RADIAL DEG	VOLUME (m ³)	VOLUME (yds ³)	MASS (Tonnes)	MASS (Ton)
0	7858	10278	12573	13830
30	17252	22565	27603	30364
60	26645	34850	42632	46895
90	36038	47136	57661	63427
120	45431	59422	72690	79959
150	54825	71708	87720	96492
180	64218	83994	102749	113024
270	92397	120851	147835	162619





Omagh, UK
Drumquin Road
Omagh
Co. Tyrone
BT78 5PN

Tel: +44 (0) 28 8241 8700
Email: magna@terex.com

terex.com/magna

