



TECHNICAL
SPECIFICATION

MC100

TRACKED CONVEYOR



OVERVIEW

TECHNICAL SPECIFICATION



Total weight:	21,800kg (48,061bs)
Transport:	Length 11.9m (39') Height 3.43m (11' 3") Width 2.8m (9' 4")
Working @ 24°:	Length 28.22m (92' 7") Height 12.9m (42' 4") Width 2.8m (9' 4")
Power Unit:	Tier 3: CAT C4.4 83kW (111hp) Tier 4F: CAT C4.4 82kW (110hp) Stage V: CAT C2.2 55kW (73hp)

NOTE: Dimensions may differ slightly from sales drawings due to differences in angles / reference points.



FEATURES & BENEFITS

- High capacity up to 600tph (661 US tph).
- Maximum feed size up to 150mm (6").
- Eliminates the need for wheeled loaders to create stockpiles - reduces labour and maintenance costs.
- Eliminates the need for handling material multiple times - reduces labour and maintenance costs.
- Improved material quality due to reduced compaction, degradation, segregation and contamination.
- Multiple hopper options available depending on required capacities and operators loading methods or application.
- Rapid set up time and manoeuvrability around site.
- Reduced fuel consumption due to reduced reliance on wheeled loaders.
- Reduced wear on wheeled loaders where a conveyor is utilised.
- Hydraulic folding head section.
- Tensioned polyurethane belt cleaner.
- Hydraulic feed in height adjustment.
- Hydraulic fold over for transport.
- Rosta scraper.
- 40 degree rollers.
- Variable speed conveyor via engine speed.
- Feedboot with removable 6mm steel wear liners.

OVERVIEW

TECHNICAL SPECIFICATION



Steel lined feedboot as standard providing extended wear life. Feedboot extensions and rubber lined options also available

Hydraulic adjustment for variable feed height reduces impact and provides optimal material transfer

Compact folding mechanism allows containerised shipping

Hydraulic folding head section

Pinless deployment

Fully protected power unit with easy access for service and maintenance

Stage 3A: CAT C4.4 83kW (111hp)

Tier 4F: CAT C4.4 82kW (110hp)

Stage V: CAT C2.2 55kW (73hp)**

Fuel tank volume: 220L (58 US GAL)

Impact rollers as standard

Hydraulic folding tail section

Dual-speed tracks for quick and controlled deployment

OVERVIEW

TECHNICAL SPECIFICATION



FEEDBOOT

Standard Feedboot Capacity:	0.6 m ³ (0.8yd ³)
Feed in Width:	1300mm (4' 3")
Extended Feedboot Capacity:	1.6m ³ (2.1yd ³)
Extended Feed in Width:	1850mm (6' 1")
Standard Min Feed Height @24°:	1013mm (3' 4")
Extended Min Feed Height @24°:	1313mm (4' 4")

DISCHARGE CONVEYOR

Width:	1050mm (42")
Belt Centres:	30.1m (98' 9")
Belt Type:	Plain
Belt Spec:	EP400 3 4+2
Drive Drum Dia:	340mm (13.4")
Tail Drum Dia:	270mm (10.6")
Max Belt Speed:	175m/m
Motor Size:	630cc
Operating Angle:	5° - 25°
Discharge Height @18°:	10.1m (33' 1")
Stockpile Capacity @18° & 37°	
Angle of Repose:	1900m ³ (2485 Cu.Yd)
Discharge Height @25°:	13.1m (43')
Stockpile Capacity @25° & 37°	
Angle of Repose:	4146m ³ (5422 Cu.Yd)

TRACKS

Shoe Width:	400mm (1' 4")
Sprocket Centre:	4000mm (13' 1")
Speed:	1.1km/h
Speed High:	1.9km/h



MC100

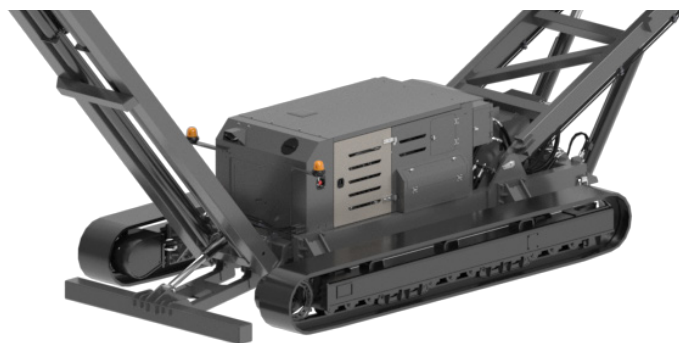
OVERVIEW

TECHNICAL SPECIFICATION



POWER UNIT & HYDRAULICS

Engine (Tier 3):	CAT C4.4
Power Rating:	83kW (111hp)
RPM:	1800rpm
Crankshaft Pump:	33/33cc
PTO Pump:	17cc Aux Pump
<hr/>	
Engine (Tier 4F):	CAT C4.4
Power Rating:	82kW (110hp)
RPM:	1800rpm
Crankshaft Pump:	33/33cc
PTO Pump:	17cc Aux Pump
<hr/>	
Engine (Tier V):	CAT C2.2
Power Rating:	55kW (73hp)
RPM:	2300rpm
Crankshaft Pump:	24/24/10cc
Diesel Tank Capacity:	220L (58 US GAL)
Hydraulic Tank Capacity:	400L (106 US GAL)



OPTIONS

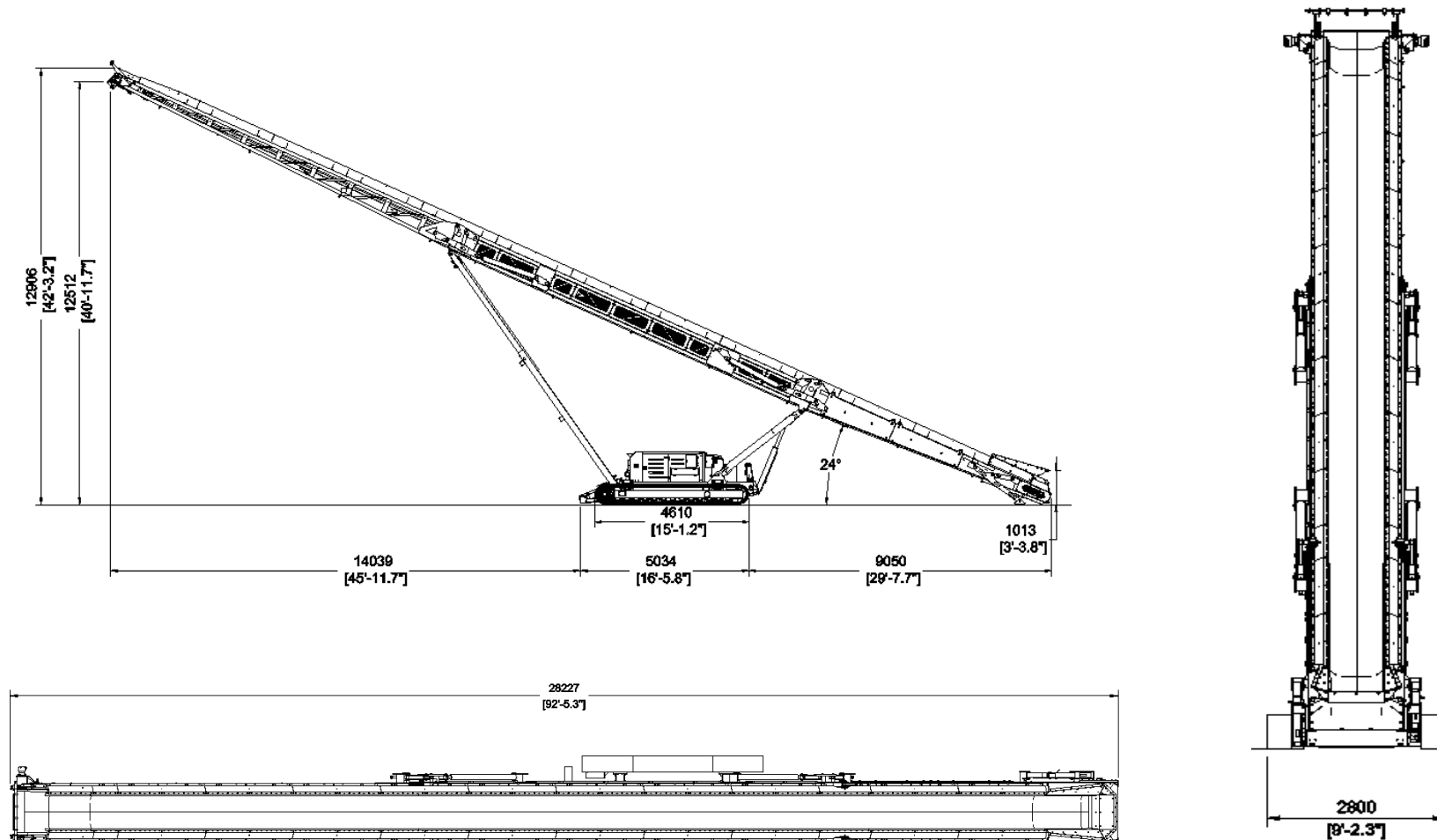
- 6mm AR400 steel wear feedboot liners
- 20mm rubber wear feedboot liners
- Feedboot extension c/w steel wear liners
- Feedboot extension c/w 20mm rubber wear liners
- Feedboot extension c/w 6mm AR400 steelwear liners
- Impact rollers at feedboot area
- Anti-rollback flaps
- Twin drive motors on discharge conveyor
- Blade type / primary scraper (plain belt only)
- Conveyor fitted with chevron belt EP315/3 Ply 3 + 1.5 covers
- Conveyor fitted with heavy duty plain belt EP500 4 ply x 8+2 covers
- Conveyor under guard length of mid-section
- Conveyor head drum guarding
- Conveyor dust covers
- Conveyor water dust suppression (spray bar only)
- Conveyor full length skirting rubber
- Powerunit c/w hydraulic oil, Century 100 - (Recommended for ambient temperatures between +15 to +50°C)
- Radio remote control for tracking
- Pull cord emergency stop on either control panel or non-control panel side of machine
- Overband magnet option complete with hydraulic kit and support frames

DIMENSIONS

TECHNICAL SPECIFICATION



WORKING



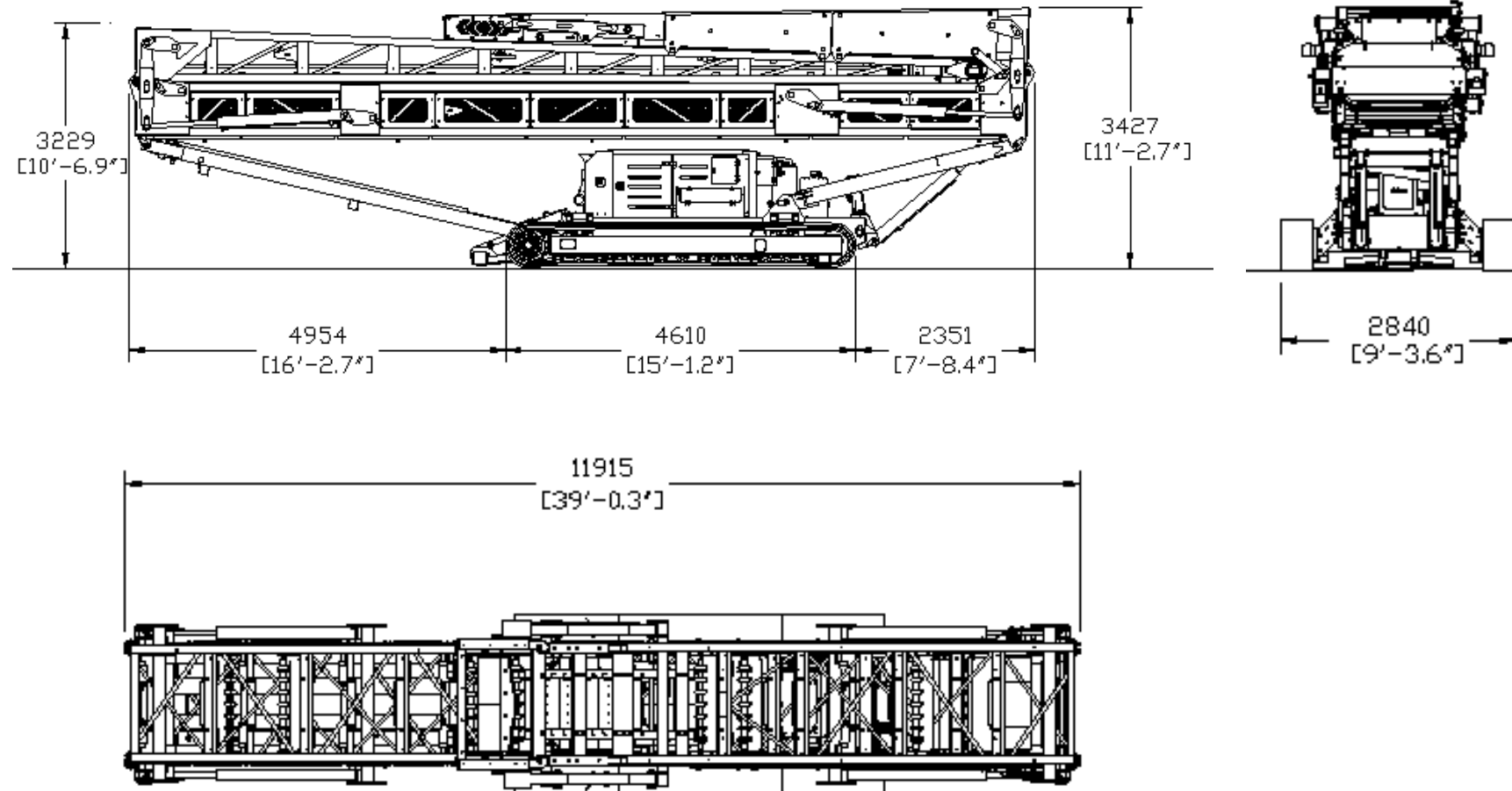
MC100

DIMENSIONS

TECHNICAL SPECIFICATION



TRANSPORT





Omagh, UK
Drumquin Road
Omagh
Co. Tyrone
BT78 5PN

Tel: +44 (0) 28 8241 8700
Email: magna@terex.com

terex.com/magna

